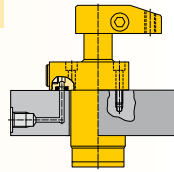


Select your mounting method:

SU series, Upper flange mounting

- Flexible design allows for manifold or threaded oil port connection
- Fixture hole does not require tight tolerances
- Easy installation with only 3 or 4 mounting bolts.

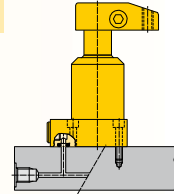
☐ 24 ▶



SL series, Lower flange mounting

- Flexible design allows for manifold or threaded port connection
- No fixture hole required
- Easy installation with only 3 or 4 mounting bolts.

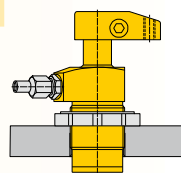
☐ 26 ▶



ST series, Threaded body mounting

- Body thread for precise cylinder height positioning
- Threaded oil port connection
- Can be threaded directly into the fixture and secured in position by means of standard flange nuts.

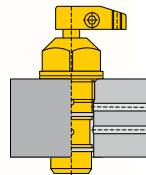
☐ 28 ▶



SC series, Cartridge mounting

- Minimal space required on fixture
- External plumbing not required
- Allows close positioning of adjoining units
- Cylinder can be completely recessed in fixture.

☐ 30 ▶



Product selection

Clamping force ¹⁾	Stroke		Upper flange	Lower flange	Threaded body	Cartridge
	kN	mm				
	clamping	total				
▼ Single acting						
	Model number ²⁾					
2,1	8,1	16,4	SURS-22	SLRS-22	STRS-22	SCRS-22
4,9	9,9	22,6	SURS-52	SLRS-52	STRS-52	SCRS-52
8,0	11,9	23,0	SURS-92	SLRS-92	STRS-92	-
10,7	12,7	27,9	SURS-121	SLRS-121	STRS-121	SCRS-122
17,4	14,0	29,5	SURS-202	SLRS-202	STRS-202	-
33,1	16,0	32,6	SURS-352	SLRS-352	STRS-352	-
▼ Double acting						
	Model number ²⁾					
2,2	8,1	16,4	SURD-22	SLRD-22	STRD-22	SCRD-22
5,6	9,9	22,6	SURD-52	SLRD-52	STRD-52	SCRD-52
9,0	11,9	23,0	SURD-92	SLRD-92	STRD-92	-
9,0	32,0	43,0	SURDL-92*	-	-	-
11,6	12,7	27,9	SURD-121	SLRD-121	STRD-121	SCRD-122
11,6	31,8	47,0	SURDL-121	-	-	-
18,7	14,0	29,5	SURD-202	SLRD-202	STRD-202	-
33,8	16,0	32,6	SURD-352	SLRD-352	STRD-352	-
33,8	31,8	48,4	SURDL-352*	-	-	-

¹⁾ With standard clamp arm. Clamp arms are sold separately (☐ 32). Clamping forces for single-acting models are reduced in order to overcome return spring force. ²⁾ For left turning swing clamps replace the R in the model number for an L. **Note:** Call Enerpac to order models with imperial thread and SAE port connections.

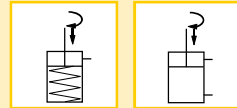
* This product is made to order. Please contact Enerpac for delivery information before specifying in your design.
www.enerpacwh.com

Force: 2,1 - 33,8 kN

Stroke: 16,4 - 48,4 mm

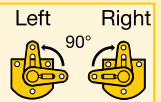
Pressure: 35 - 350 bar

- E** Cilindros giratorios
- F** Vérins de bridage pivotants
- D** Schwenkspannzylinder



Options

Available as both left and right turning



Clamp arms

☐ 32 ▶



Work supports

☐ 43 ▶



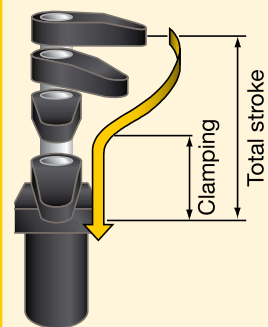
Accessories

☐ 86 ▶



Important

Actual clamping may only take place when the cylinder has completed its 90° swing.



All swing clamps have swing angle repeatability of $\pm 1^\circ$.

Other swing angles available upon request.
 Contact Enerpac for info.