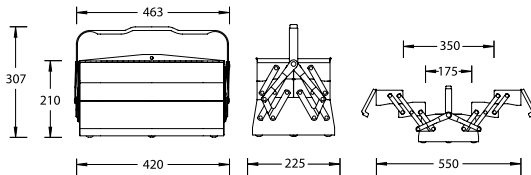
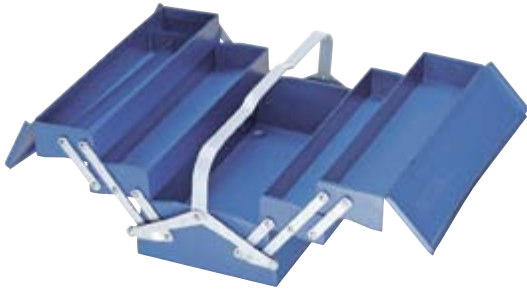


1265 L TOOL BOX

5 compartments

- > With riveted joints
- > Compartments to be fully pulled out
- > Great stability even if only one side is opened
- > GEDORE blue powder-coated
- > Dimensions: H 210 x W 420 x D 225 mm
- > Particularly suitable for tool assortments S 1151 and S 1151 A

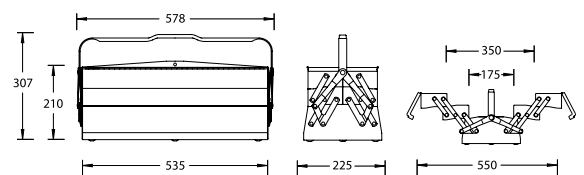
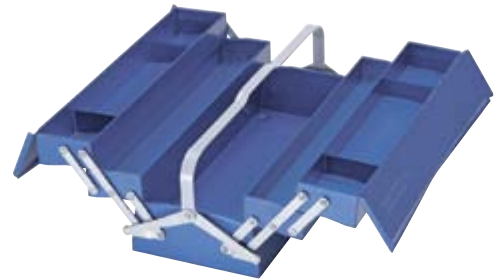


H	W	D		Code	No.
210	420	225	5.2	6609060	1265 L

1335 L TOOL BOX

5 compartments, long pattern

- > With riveted joints
- > Compartments to be fully pulled out
- > Great stability even if only one side is opened
- > GEDORE blue powder-coated
- > Dimensions: H 210 x W 535 x D 225 mm
- > Particularly suitable for tool assortments S 1024, S 1025, S 1151 and S 1151 A



H	W	D		Code	No.
210	535	225	6.3	6610580	1335 L

Tool Chests

Central locking
Drawers fully extendable

1410 L TOOL CHEST

- > With three large and three small drawers and carrying tray
- > All drawers fully extendable on runners
- > Particularly suitable for tool assortments S 1002 and S 1005 A
- > Made from sturdy sheet steel, fitted with central lock
- > In GEDORE blue
- > Dimensions: H 364 x W 663 x D 308 mm
- > Max. loading 75 kg



H	W	D		Code	No.
364	663	308	28.0	6614300	1410 L

1420 L TOOL CHEST

- > With three large drawers and carrying tray
- > All drawers fully extendable on runners
- > Particularly suitable for tool assortments S 1002 and S 1005 A
- > Made from sturdy sheet steel, fitted with central lock
- > In GEDORE blue
- > Dimensions: H 298 x W 610 x D 265 mm
- > Max. loading 75 kg



H	W	D		Code	No.
298	610	265	20.0	6615700	1420 L

