

# MP-Series, Multifluid Hand Pumps

▼ Shown: **MP-110**



- Superior corrosion resistance
- Standard Nitrile seals – can be used for a wide range of fluids such as demineralised water, oil/water emulsions, waterglycols, mineral oils
- Two speed pumps up to 1000 bar pressure
- Buna Nitrile seals can be exchanged with optional EPDM seal for use with Skydrol or brake fluids
- Impregnated aluminium anodized pump housing with stainless steel internal pumping components
- Externally adjustable pressure relief valve
- 1/4" NPTF gauge port
- For use with single-acting cylinders and tools.

## MP Series

Flow at Rated Pressure:

**1,6 - 20,6 cm<sup>3</sup>/stroke**

Maximum Operating Pressure:

**110 - 1000 bar**



### Optional Reservoir Kit

Includes 10 litres tank with skid frame, top plate with reservoir seal, suction pipe and mounting bolts.

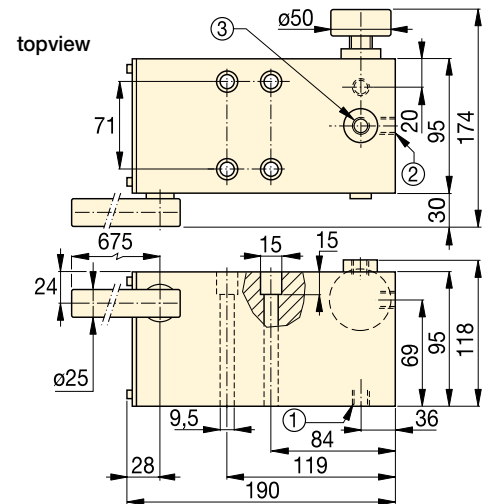
Useable oil capacity is 7,4 litres. Order model number: **MP-10T**.



### Stainless Steel Hand Pump

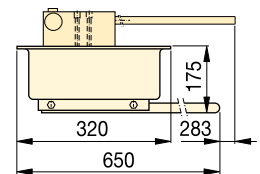
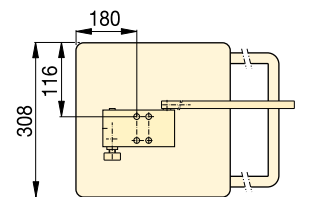
Also available as stainless steel hand pump, model number **11-400**.

Page: **80**



### MP-110, 350, 700, 1000

- ① Suction / Tank return port 3/8"-18 NPTF
- ② Pressure port 3/8"-18 NPTF
- ③ Gauge port 1/4"-18 NPTF



**MP-10T**

| Pump Type | Usable Oil Capacity *<br>(cm <sup>3</sup> ) | Model Number ** | Pressure Rating (bar) |           | Oil Displacement per Stroke (cm <sup>3</sup> ) |           | Max. Handle Effort (kg) | Piston Stroke (mm) | Weight (kg) |
|-----------|---|-----------------|-----------------------|-----------|--|-----------|-------------------------|--------------------|-------------|
|           |   |                 | 1st stage             | 2nd stage | 1st stage                                      | 2nd stage |                         |                    |             |
| Two Speed | *   | <b>MP-110</b>   | 35                    | 110       | 52,6   | 20,60     | 45                      | 27,1               | 6,6         |
|           | *   | <b>MP-350</b>   | 35                    | 350       | 52,6   | 7,15      | 45                      | 27,1               | 6,6         |
|           | *   | <b>MP-700</b>   | 35                    | 700       | 52,6   | 2,63      | 45                      | 27,1               | 6,6         |
|           | *   | <b>MP-1000</b>  | 35                    | 1000      | 52,6   | 1,60      | 45                      | 27,1               | 6,6         |

\* MP-Pump includes 1,5 mm thick gasket for reservoir mounting. MP-Series pumps requires the use of an external reservoir.

\*\* MP-Series pumps are for use with single-acting cylinders and tools.